

IP67 LED STRIP KIT (SINGLE COLOUR) FITTING INSTRUCTIONS

These instructions are for the Déluce Lighting IP67 LED Strip Kit :

**IP67LEDSTRIPKITWH, IP67LEDSTRIPKITWW,
IP67LEDSTRIPKITR, IP67LEDSTRIPKITG & IP67LEDSTRIPKITB**

IMPORTANT INSTALLATION INFORMATION

- Installation should be carried out in accordance with the latest edition of the IEE Wiring Regulations (BS7671) and taking into consideration the latest Building Regulations. If in doubt, consult a qualified electrician.
- **Before commencing any installation or maintenance work, ensure electricity is switched off at the mains.**
- Please take note of the maximum rated voltage for your LED Strip Light.
- Please take note of the IP (Ingress Protection) rating of LED Strip Light when deciding location.

GENERAL INSTALLATION - SAFETY

- Please make sure you are safe when working at height.
- Employ the latest safety regulations and procedures to ensure the safe installation of the LED Strip Light.

INSTALLATION INSTRUCTIONS

- To achieve the best results from your LED Strip Light we suggest you take into account the following points before you fit the unit.
1. Ensure the mounting surface is clean and free of dust, grease or flaking material
 2. Peel back the protective film away from the strip exposing the glue and apply to the mounting surface in the required location.
 3. When the desired length as been mounted, cut the length at the designated cutting line; marked with a ✂
 4. Connect the LED Strip cable to the driver via a suitable IP67 rated terminal block as follows:
RED (Positive +) to **BROWN**
BLACK (Negative -) to **BLUE**
 5. Connect the supply cable to the Driver via a suitable IP67 rated terminal block and make the electrical connections as follows:
LIVE - (Red or Brown)
NEUTRAL - (Black or Blue)
EARTH - (Green/Yellow) marked E ⊕
 6. Ensure that the LED strip load does not exceed that of the driver, the driver supplied can power a maximum continuous run of LED strip lights of 8 Metres.
 7. Switch on the power supply for testing and adjustment.
 8. Over the tailing end of the LED strip light fit an End Cap (apply a small amount of glue to the inside of the end cap and then slide over the tailing end area).



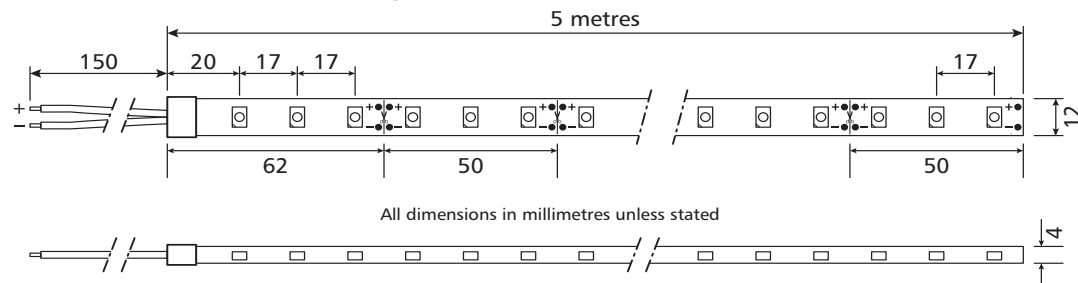
220-240V    IP67  

Ref no.	Watts	Description	Length	No. of LED's
IP67LEDSTRIPKITWH	24W	Cool White LED strip light	5m	300
IP67LEDSTRIPKITWW	24W	Warm White LED strip light	5m	300
IP67LEDSTRIPKITR	24W	Red LED strip light	5m	300
IP67LEDSTRIPKITG	24W	Green LED strip light	5m	300
IP67LEDSTRIPKITB	24W	Blue LED strip light	5m	300

Single Colour LED Strip wiring diagram



Dimensions and Schematic Diagram



GUARANTEE

This product is guaranteed in the EU for a period of 1 year from the date of purchase. The guarantee is invalid in the case of improper use, installation, tampering, removal of the QC date label, installation in an improper working environment or installation not according to the current edition of the IEE Wiring Regulations (BS 7671). Should this product fail during the guarantee period it will be replaced free of charge, subject to correct installation and return of the faulty unit. Déluce Lighting does not accept responsibility for any installation costs associated with the replacement of this product. Your statutory rights are not affected. Déluce Lighting reserves the right to alter specifications without prior notice.



PLEASE READ THESE INSTRUCTIONS CAREFULLY BEFORE INSTALLATION
LEAVE A COPY FOR THE USER/MAINTENANCE ENGINEER FOR FUTURE REFERENCE
We recommend this fitting is installed by a qualified Electrician.

IP67 LED STRIP KIT (SINGLE COLOUR) FITTING INSTRUCTIONS

Cutting the LED Strip Light

The LED Strip can be cut at 50mm intervals and can be relinked using either a connect clip, a double ended connector cable c/w 150mm of cable, single ended connector clip c/w 150mm of cable or by soldering a cable between the LED Strip Light's copper connectors (all connectors supplied with kit).

Cut the LED strip at the designated cutting line, marked with a ✂ its is recommended that a suitable craft knife is used to cut the LED Strip Light.

Once cut; use the craft knife to remove the outer plastic sleeve, as close to the nearest LED light, near the cut as possible to expose the copper connectors (marked + & -).

Slide a piece of heat shrink over the end of the LED strip - open a flap on a connector clip / connector cable - slide the now cleaned end piece into one side of a connector clip / connector cable and then using a soldering iron, **YOU MUST** solder the connector clip's terminals to the LED strips copper connectors in turn.

Or solder a piece of cable between the LED Strip Light's copper connectors as follows :

RED (Positive + to Positive +)

BLACK (Negative - to Negative -)

POLARITIES MUST BE MAINTAINED

Using the supplied glue, glue down the flap(s) of the connector clip; then slide the heat shrink sleeve over the now finished connection (using a Hair Dryer) heat the heat shrink until it contracts sufficiently.

Over the tailing end of the LED strip light fit an End Cap (apply a small amount of glue to the inside of the end cap and then slide over the tailing end area).

Then follow the steps 1 - 7 for installation.

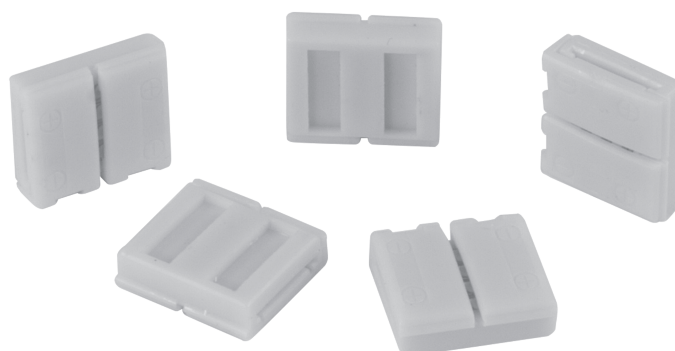
IP67 LED Strip Accessories

Ref no.	Qty	Description
IP67LEDSTRIP90B	1	IP67 LED Strip Single Colour 90 Degree Bend
IP67LEDSTRIPCLIP	1	IP67 LED Strip Mounting Clip
IP67LEDSTRIPEC1	10	IP67 LED End Cap For Single Colour Plus Glue

Ref no.	Qty	Description
LEDSTRIPACC001	5	10mm Single colour strip connector c/w 150mm of wire
LEDSTRIPACC002	5	10mm Single colour strip connector
LEDSTRIPACC003	5	10mm Single colour strip link c/w 150mm of wire - connector at each end

3M ADD-ON LED STRIPS

Ref no.	LED Colour	Length	No. of LED's
IP67LEDSTRIP3MWH	Cool White	3M	180
IP67LEDSTRIP3MWW	Warm White	3M	180
IP67LEDSTRIP3MR	Red	3M	180
IP67LEDSTRIP3MG	Green	3M	180
IP67LEDSTRIP3MB	Blue	3M	180



PLEASE READ THESE INSTRUCTIONS CAREFULLY BEFORE INSTALLATION
LEAVE A COPY FOR THE USER/MAINTENANCE ENGINEER FOR FUTURE REFERENCE
We recommend this fitting is installed by a qualified Electrician.