

If the appliance is still under guarantee, return it to your supplier or contact our after sales service.

DO NOT attempt to repair the Towel Rail.

SPECIFICATION HSTRL100SS

Electrical: 100W; 220-240V; 50Hz; 22kG;

Dimensions/weight: 870h x 530w x105d mm; 3.6kG;



Waste electrical products should not be disposed of with household waste. Please recycle where facilities exist. Check with your local authority or retailer for recycling advice.

HEATSTORE

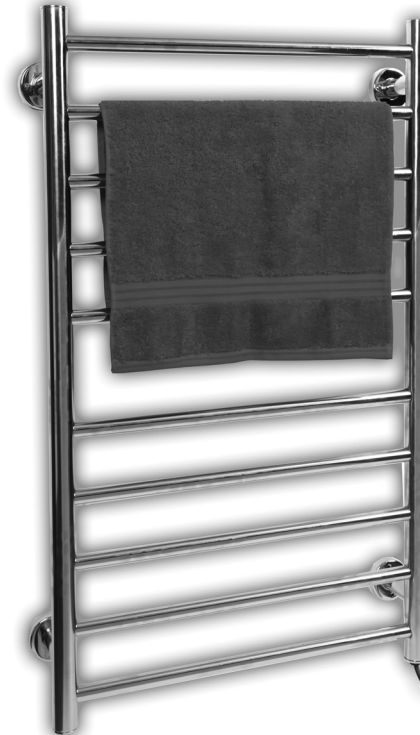
Telephone: **0117 923 5375** Fax: **0117 923 5374**

Victoria Road, Avonmouth, Bristol BS11 9DB

www.heatstore.co.uk

HSTRL100SS Ladder Towel Rail

Installation Instructions



IMPORTANT SAFEGUARDS

WHEN USING ANY ELECTRICAL APPLIANCE, BASIC SAFETY PRECAUTIONS SHOULD ALWAYS BE FOLLOWED.

PLEASE READ ALL INSTRUCTIONS CAREFULLY AND RETAIN FOR FUTURE REFERENCE

IF IN ANY DOUBT ABOUT THE INSTALLATION OR USE OF THIS PRODUCT, CONSULT A COMPETENT ELECTRICIAN.

HEATSTORE

SAFETY AND ELECTRICAL

- This equipment has been designed and manufactured to the highest international standards, but like all electrical appliances that are operated by mains voltage, care must be taken if you are to obtain the best results and safety is to be assured.
- THE TOWEL RAIL MUST BE WIRED TO COMPLY WITH THE CURRENT EDITION OF THE IEE REGULATIONS BY A QUALIFIED ELECTRICAL ENGINEER. THE REGULATIONS CONTAIN IMPORTANT REQUIREMENTS REGARDING SAFETY OF ELECTRICAL APPLIANCES IN BATHROOMS.
- IMPORTANT! A 13-AMP PLUG SHOULD NOT BE FITTED TO THE MAINS LEAD.
- The Towel Rail cable should be connected to the electrical supply through a means for disconnection in all poles in accordance with the wiring rules. The cable connected to the appliance must be fixed wiring.
- If used in a bathroom it should be connected to an unswitched fused spur outlet. In other rooms a switched unit should be used.
- The Towel Rail is designed as a fixed electrical appliance for fixed wiring and must be earthed.
- The cable entry can be either on the left or right hand side, but must be horizontal and at the bottom.
- A 3-amp fuse must be used. As the colours in the wires in the mains supply cord may not correspond with the coloured markings identifying the connection terminals, make the electrical connections as:-
 - The GREEN/YELLOW earth wire to the terminal marked \oplus or "E".
 - The BROWN (L) live wire to the terminal marked "L".
 - The BLUE (N) neutral wire to the terminal marked "N".
- DO NOT use the appliance if damaged.
- If the supply cord is damaged, it MUST BE replaced by the manufacturer, its service agent or similarly qualified persons in order to avoid a hazard.
- DO NOT use the appliance to carry articles that have been cleaned with dry cleaning fluids.
- DO NOT use the appliance to carry articles that have been in contact with oil or petroleum based products.
- DO NOT use the appliance unless it has been fitted to the wall as per these instructions.

MOUNTING PROCEDURE

When installed in a bathroom, the Towel rail must be at least 600mm away from the bath or shower area. The Towel Rail should always be fixed to the wall at least 600mm above the floor level.

- Place the Towel Rail face down on a flat surface, and loosely assemble each fixing point into the reverse of the towel rail using the spacer bar, fixing cover-cap and bolt, aligning with the hexagonal thread as shown in Figure 1.
- Tighten each fixing and then offer up the Towel Rail to the wall and mark off the fixing holes for the two holes on each fixing point, taking care to make the rail squarely aligned on the wall.
- Drill and plug the wall suitable for the supplied plugs/screws.
- Screw each fixing point to the wall (see Figure 2).

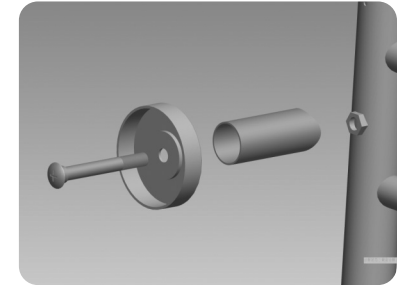


Figure 1

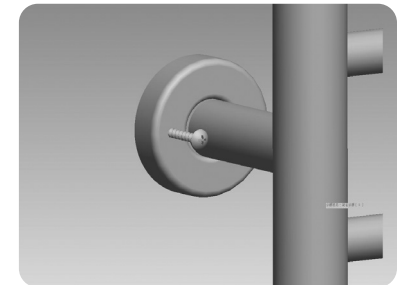


Figure 2

CLEANING

To clean the Towel Rail, polish with a clean dry cloth when the Towel Rail is switched off.

If a more thorough clean is required, the use of non-abrasive wax polish (similar to those used to polish car paintwork) will help to maintain the chromium finish).

Under no circumstances should any kind of abrasive or spray cleaner be used to clean the Towel Rail. These may contain chemicals, which can affect the surface finish and as such may invalidate your warranty.

IF YOUR TOWEL RAIL DOES NOT WORK

Check that the fuse has not blown at the flex outlet, or at the distribution board.

Should none of the above remedies work, then consult an accredited service agent.