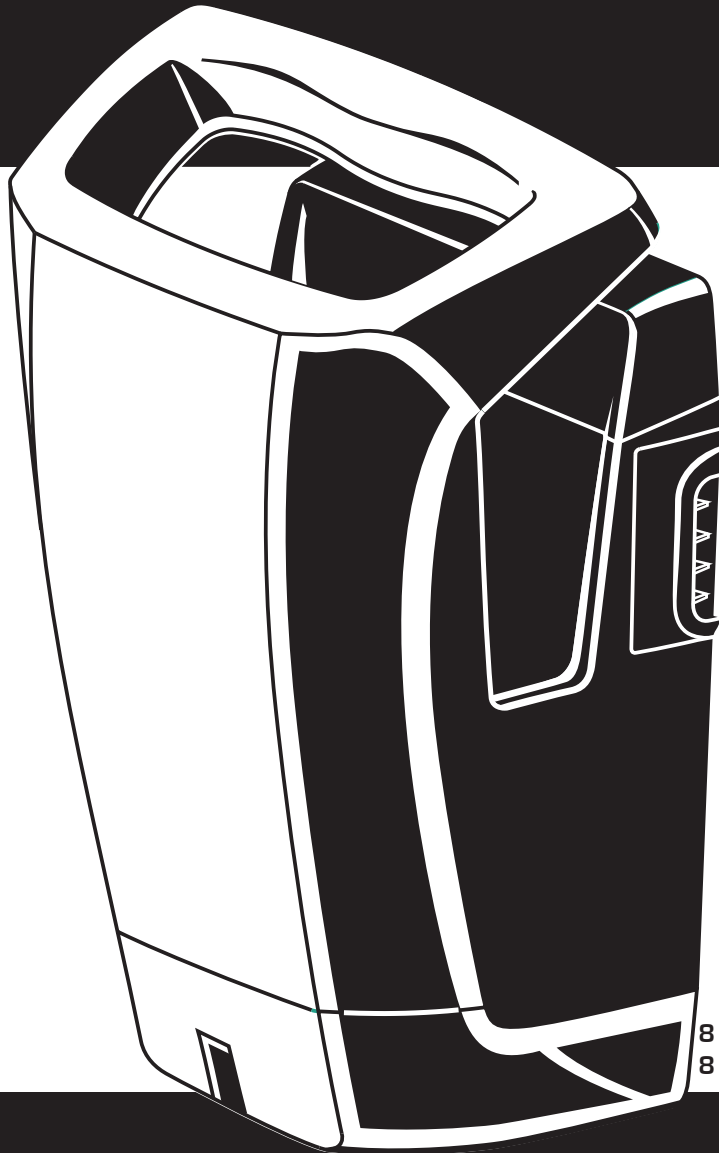


# 2G Dryer

Hand dryer




8 11 962: STELL'AIR blanc  
8 11 963: STELL'AIR gris métal

Installation and user guide - READ AND SAVE THESE INSTRUCTIONS



## IMPORTANT SAFETY PRECAUTIONS

- Never attempt to install the appliance yourself, unless you are a suitable qualified technician. Doing so may affect its operation and safety
- This appliance must be installed by a qualified technician. Incorrect electrical connection can result in electrocution or short circuits.
- For additional protection, the installation of a residual current device (RCD) having a rated residual operating current not exceeding 30 mA is advisable in the electrical circuit supplying the bathroom. Ask your installer for advice.
- Never take off the appliance when it is connected.
- Do not connect any other appliances on the same line. It may result in overheating and fire
- Before use, ensure the rated voltage indicated on the appliance match the supply voltage.
- Only use this hand dryer to dry hands.
- WARNING: Do not use this appliance near bathtubs, showers, basins or other vessels containing water. 
- This appliance is not intended for use by persons (including children) with reduced physical, sensory or mental capabilities, or lack of experience and knowledge, unless they have been given supervision or instruction concerning use of the appliance by a person responsible for their safety.
- Children shall not play with the appliance.
- Do not allow children to hang from the appliance, as it may become detached from its support.
- Cleaning and user maintenance shall not be made by children without supervision.
- Disconnect the appliance before inspecting or cleaning it.
- Always use the appliance with its receptacle and air filters. Otherwise water may enter the appliance, resulting in a short circuit or electrocution.

---

# CONTENTS

<b>I</b> INSTALLATION	3
<b>II</b> USE	10
<b>III</b> INDICATOR LIGHTS	11
<b>IV</b> MAINTENANCE AND CLEANING	12
<b>V</b> TECHNICAL CHARACTERISTICS	14

---

# I INSTALLATION

## ■ CAUTION

- Never attempt to install the appliance yourself, unless you are a suitably qualified technician.  
Doing so may affect its operation and safety.
- Do not installed the appliance when it is connected.
- Install the appliance on a support that is sufficiently solid to attach it securely.

## ■ Precautions before installing the appliance

- Do not install the appliance in places with the following characteristics:
- Temperature lower than  $-10^{\circ}$  or higher than  $+40^{\circ}\text{C}$ .
  - Places where the appliance may come into direct contact with water.
  - Places exposed to severe condensation.
  - Places where corrosive or neutral gases are present.
  - At less than 20m or more than 2000m above sea level.

## ■ Information for installation

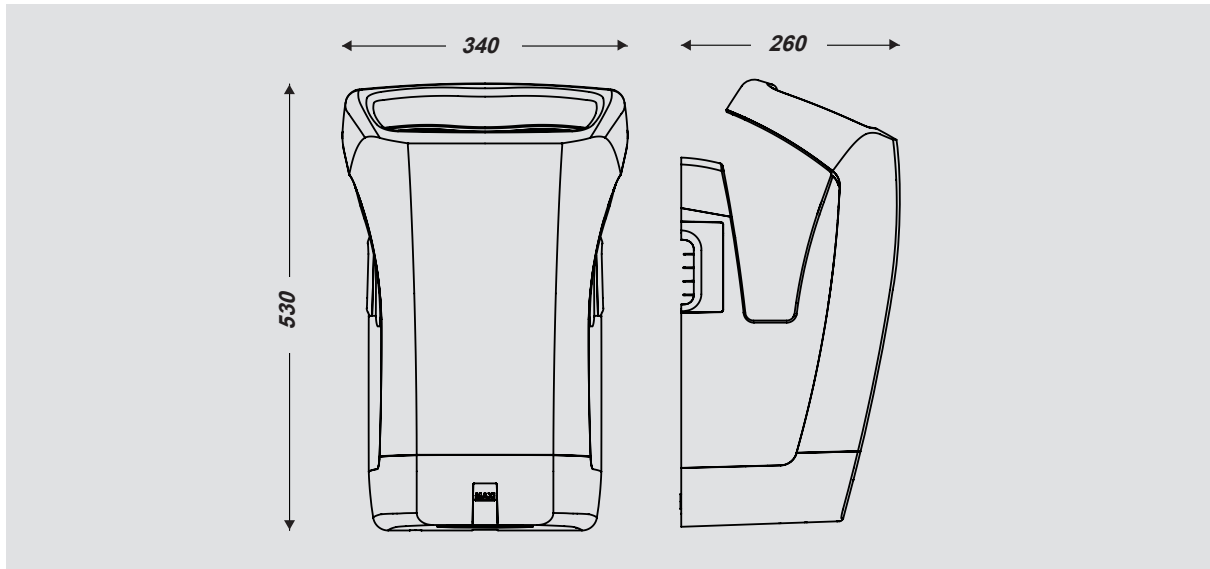
- Use a monophase AC current of 220V-240V / 50 Hz.
- Use a power supply cable with conductors with a cross-section of  $2.5\text{mm}^2$ .
- Leave at least 10 cm free on either side in order to access the filters.
- Avoid places where the appliance could be hit by a door.
- Install the appliance on a perfectly flat wall.
- Allow for the power supply cable inlet.
- Find out the dimensions and space requirements of the product before installing.

## ■ APPLIANCE GUARANTEED FOR 3 YEARS

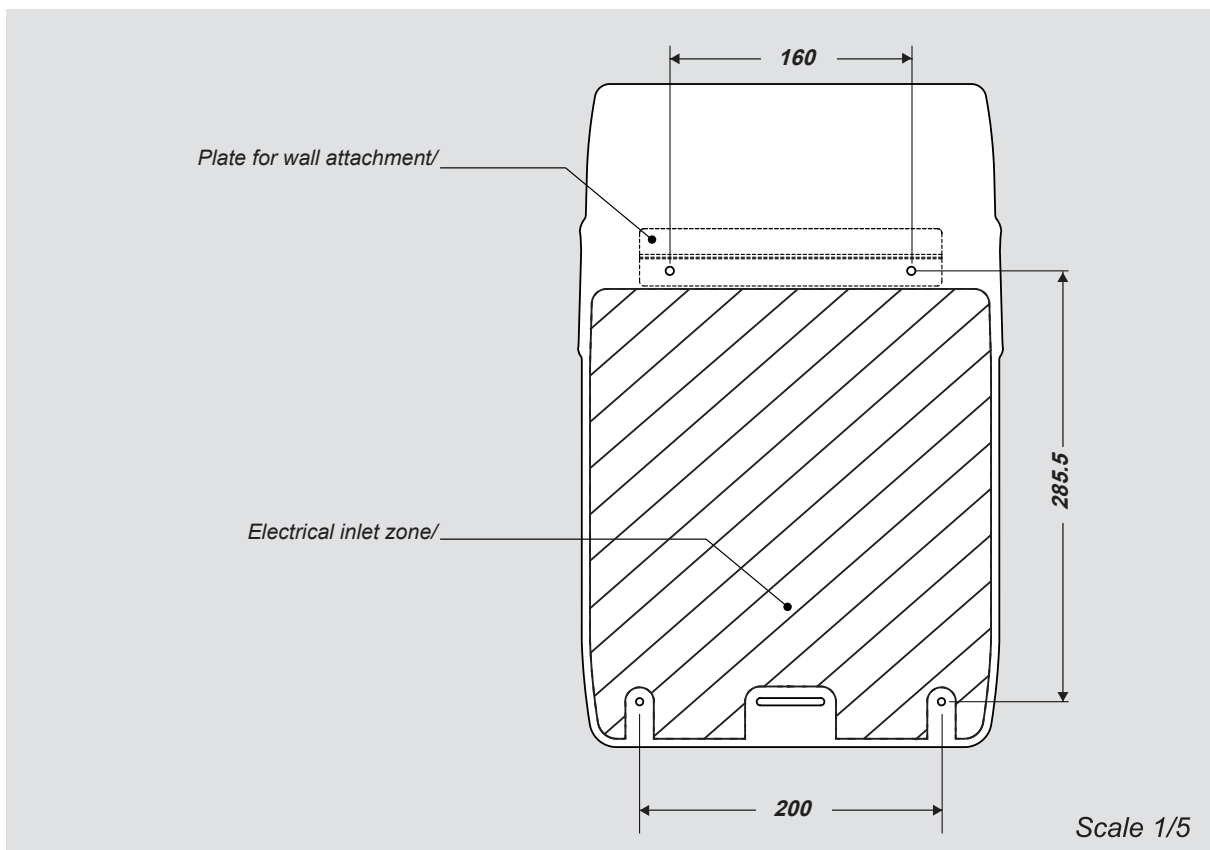
Faulty connection or any damage resulting from wrongly usage or which is in contradiction to the instructions in this leaflet will render the guarantee void.

This equipment complies with the regulations in European directives 2006/95/CE and 2004/108/CE

## ■ Dimensions



## ■ Space requirements and installation constraints /

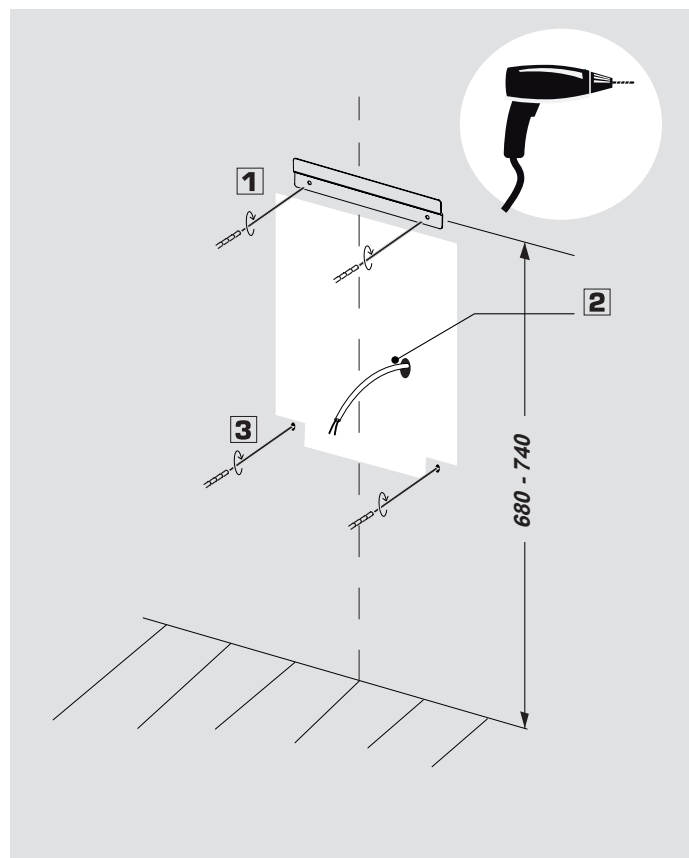


# Installation procedure

1

## Attaching the metal wall support plate:

- 1 Mount the wall support plate at the required height. The recommended height is between 68 and 74 cm.
- 2 Provide a wall cable outlet that is adapted to the height of the appliance.
- 3 Prepare the attachment holes in the lower part of the appliance (drilling template on Pages 7-8 ).

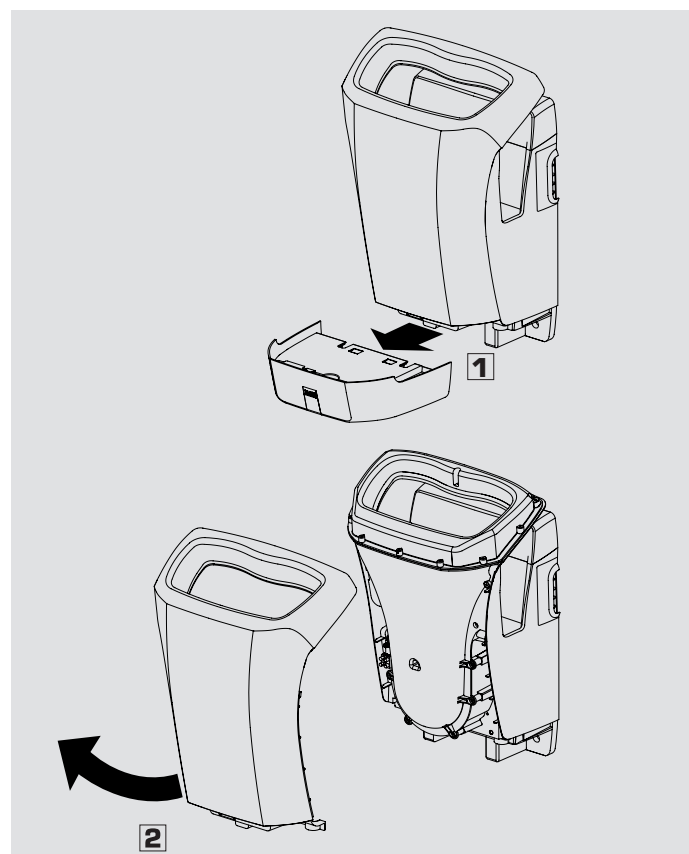


2

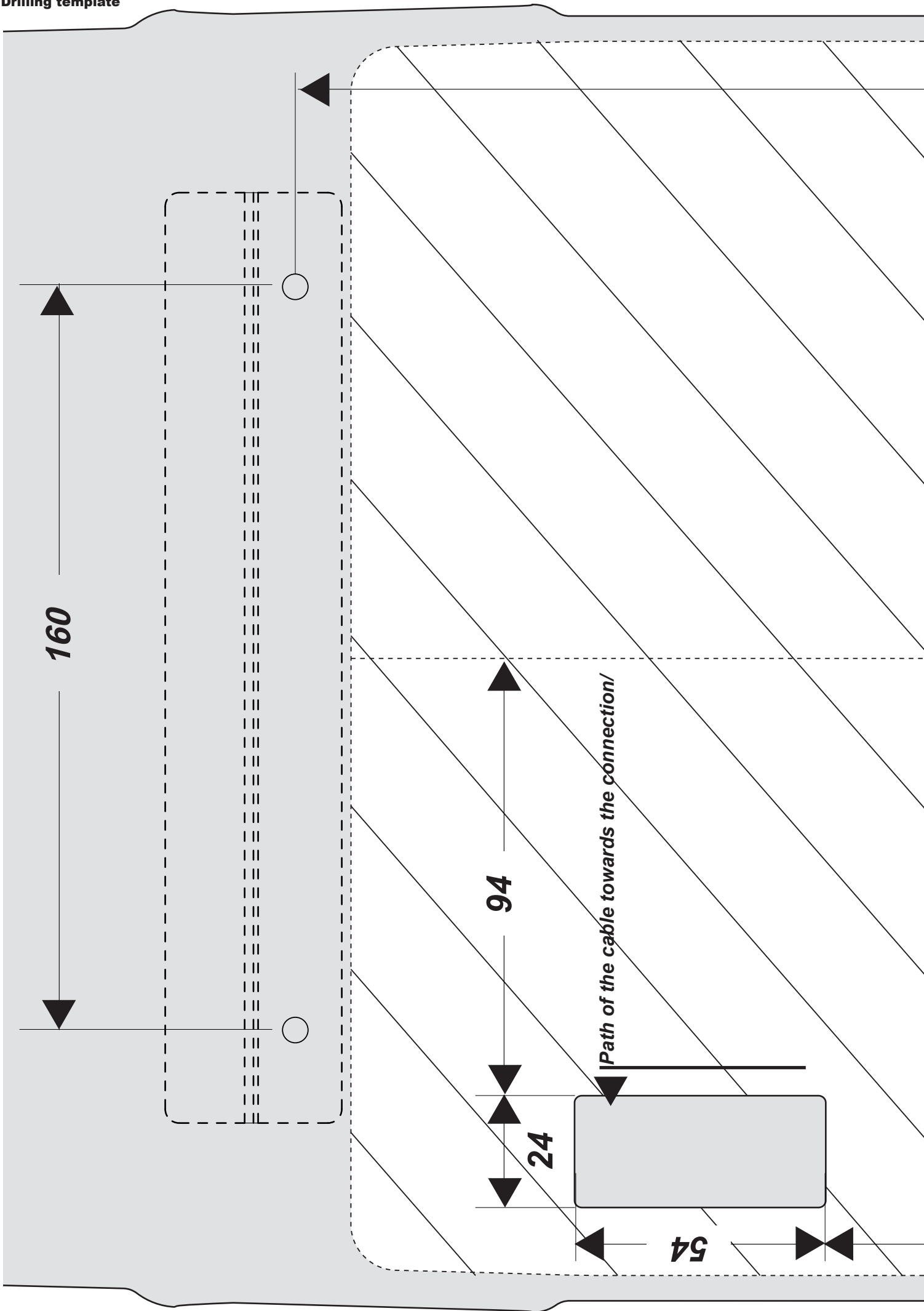
## Preparing the appliance

Removing the tank:

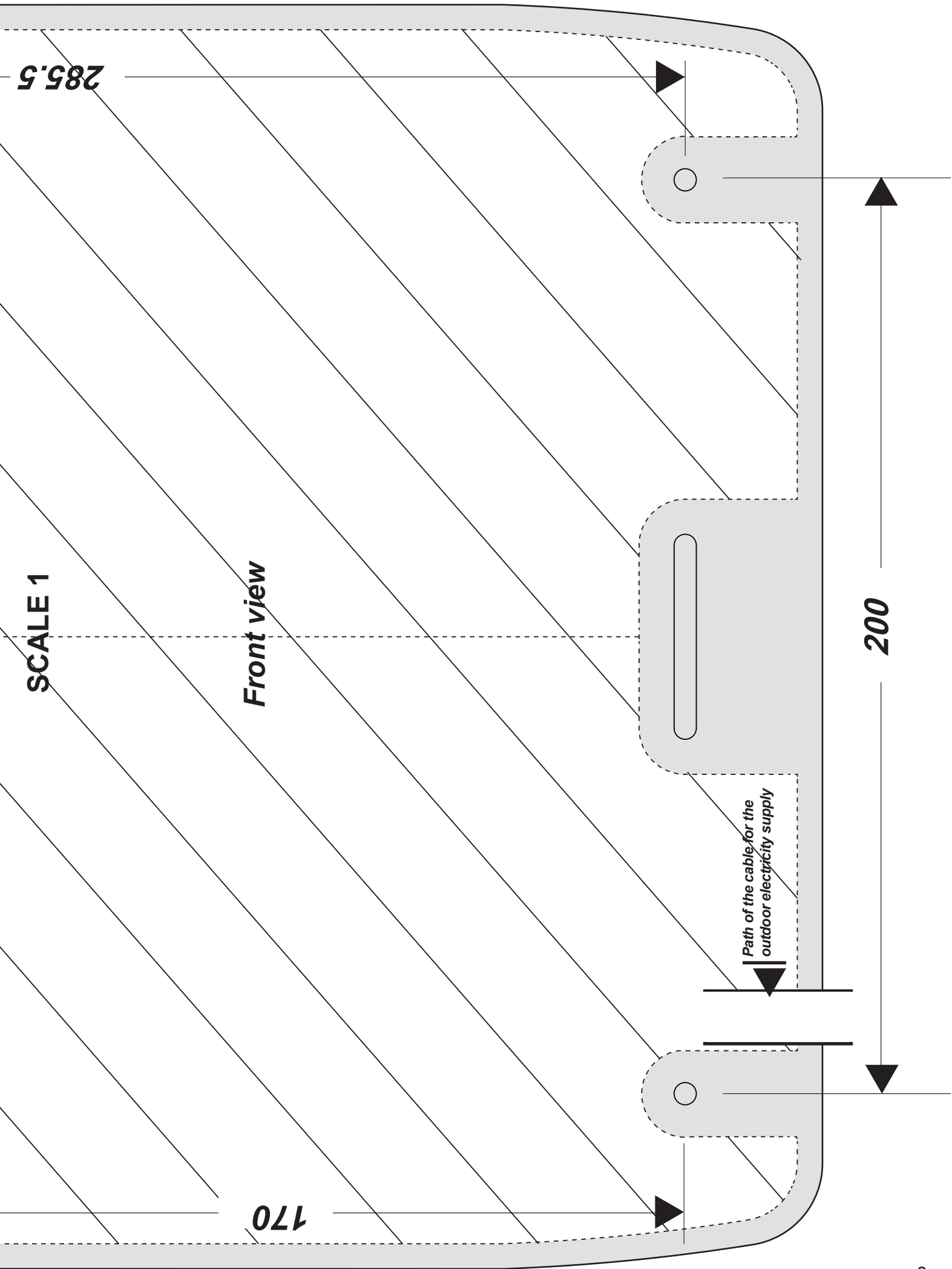
- 1 Pull the tank forwards.  
Remove the cover.
- 2 The cover is not screwed in place when delivered.  
Remove the cover.



■ Drilling template



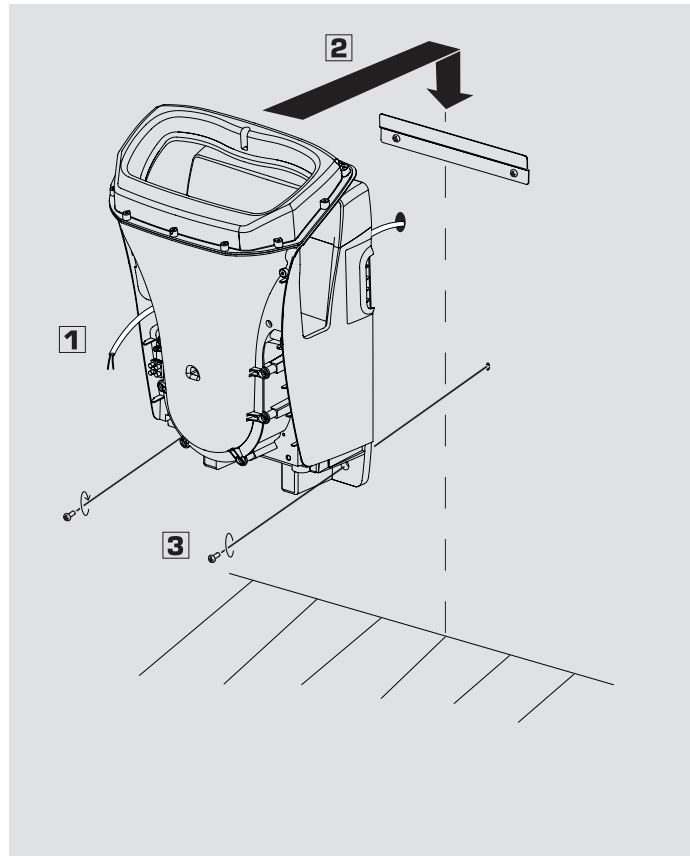




### 3

#### Mounting the appliance on the wall

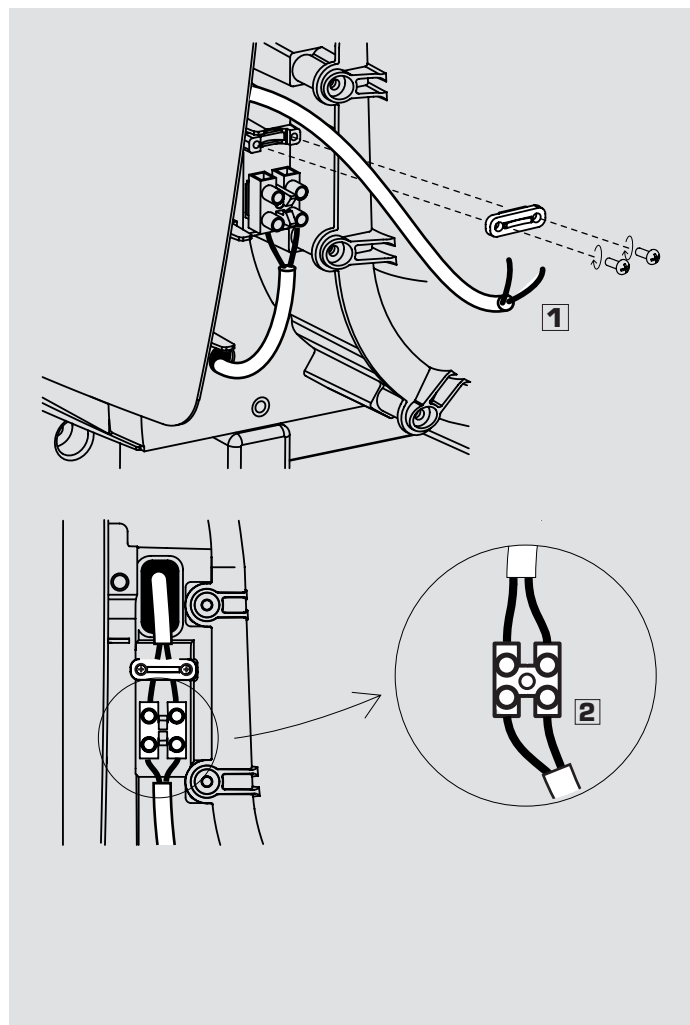
- 1 Pass the power supply cable through the hole and towards the front.
- 2 Mount the appliance on the support plate.
- 3 Secure the base of the product.



### 4

#### Connection to the terminal strip

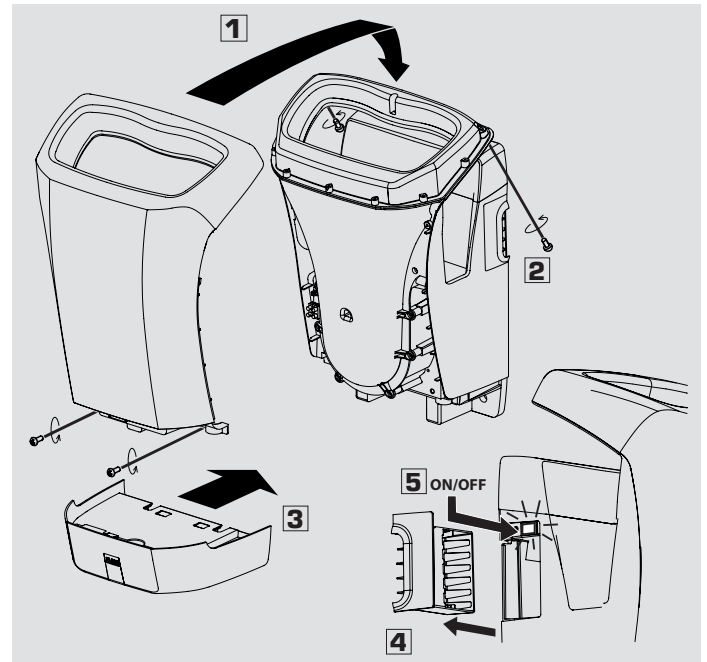
- 1 Install and tighten the cable clamp.  
Adjust the length of the power supply wires.
- 2 Connect the two power supply wires to the terminal strip.



5

**End of the installation**

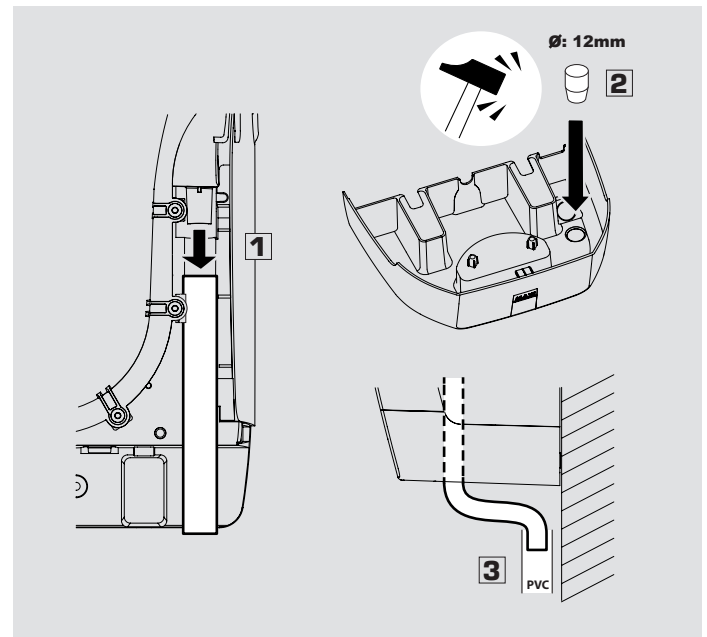
- 1 Install the cover.
- 2 Tighten the four screws.
- 3 Install the tank.
- 4 Remove the filter support from the left.
- 5 Switch on thanks to the on /off switch



6

**OPTION : Connection to the drainage**

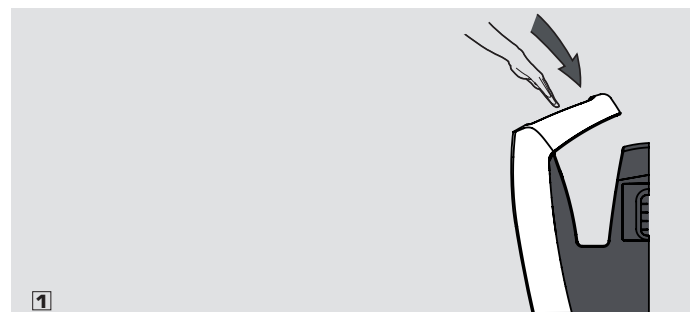
- 1 Make one hole in the tank meant for the discharge-  $\varnothing$ : 12mm
- 2 Install the new longer spillway hose
- 3 You can realize the junction with the sluice  
(Think of installing a trap to avoid bad odours)



## UTILISATION / USE BENUTZUNG / UTILIZACIÓN

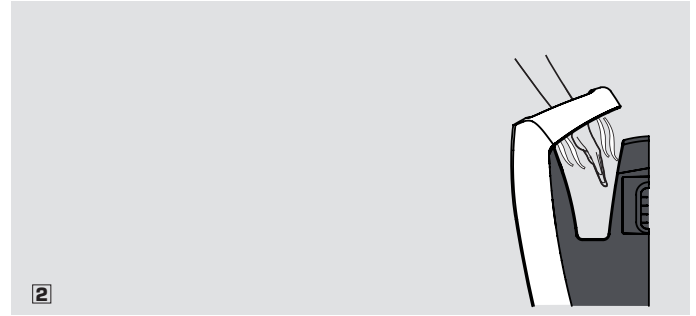
1

Place both hands inside the ring. The drier starts automatically.



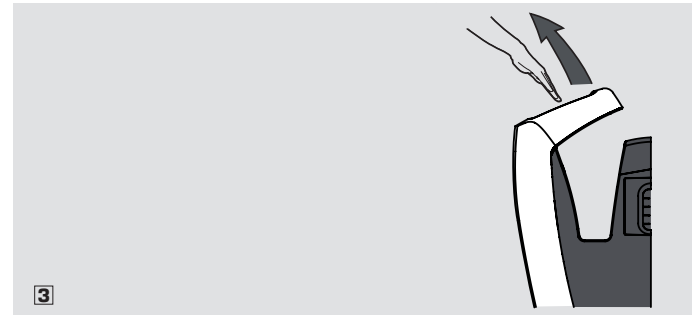
2

Slowly remove both hands as the air flow drives the water off your skin.



3

Completely remove your hands. This takes between 10 and 15 seconds. The appliance stops automatically.



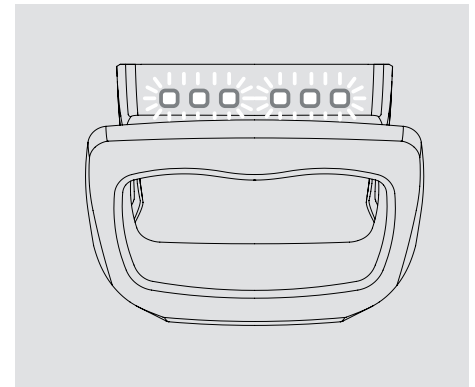
## INDICATOR LIGHTS

- When the product is switched on, the indicators LEDs in the ring indicate that it is working properly. If the lights are off, the appliance is off too.

1

### Initialisation of the PCB.

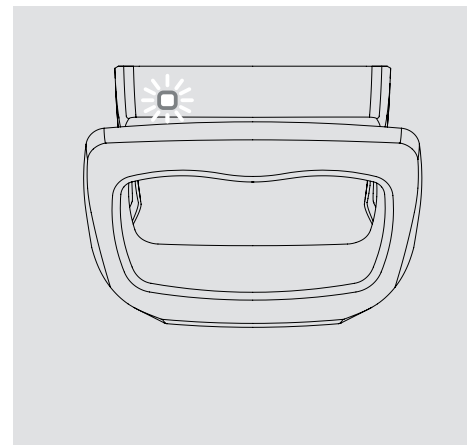
For 7 seconds after the appliance is switched on, the flashing of the LEDs indicates that the detection system is being initialised. Do not use the appliance during this period.



2

### Detection problem:

The motor cuts out for 60 seconds, after 5 minutes seconds of continuous detection. The LED on the far right flashes quickly. After 15 repeated cycles, the motor cuts out and the LED flashes slowly. Disconnect the appliance.



### En caso de problema de detección:

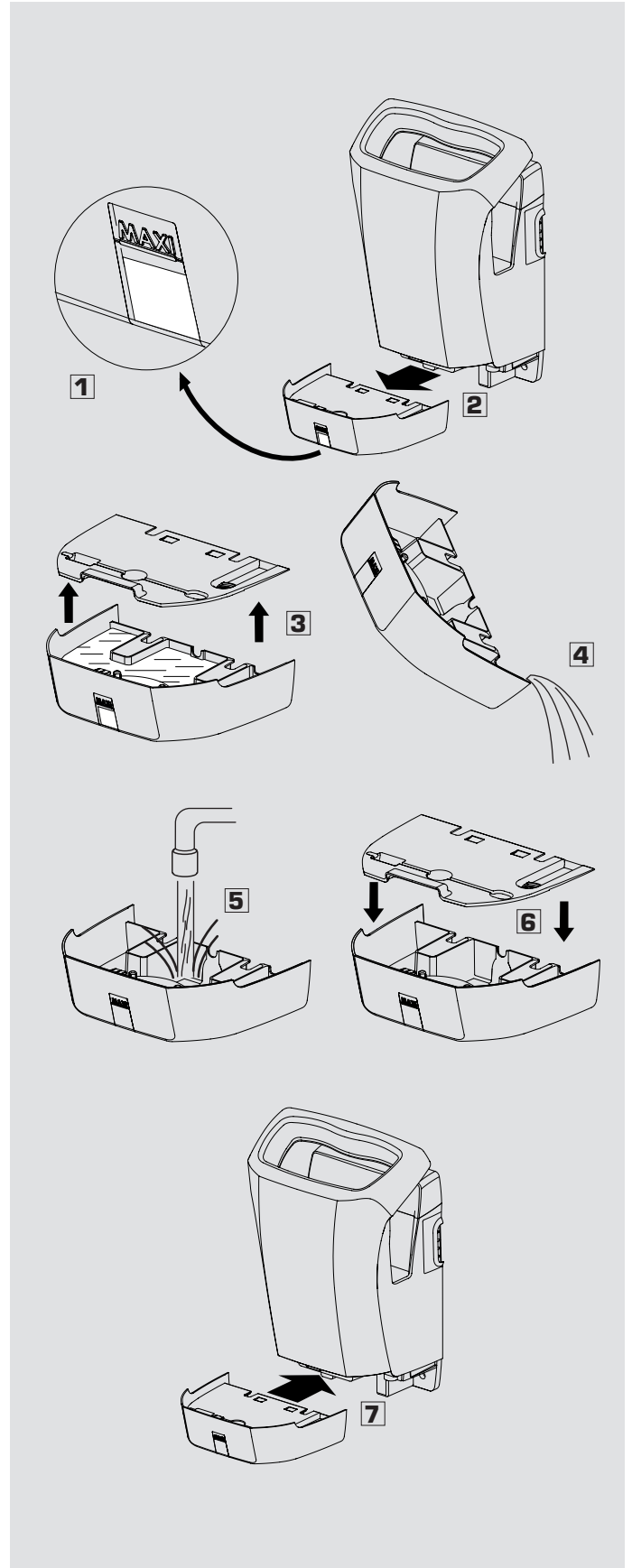
Al cabo de 5 minutos de detección continua, el motor se detendrá automáticamente durante 60s y el led situado en el extremo derecha parpadeará rápidamente. Al cabo de 15 repeticiones de esta operación, el motor se apagará y los testigos luminosos parpadearán lentamente. Desconectar el aparato.

# MAINTENANCE

1

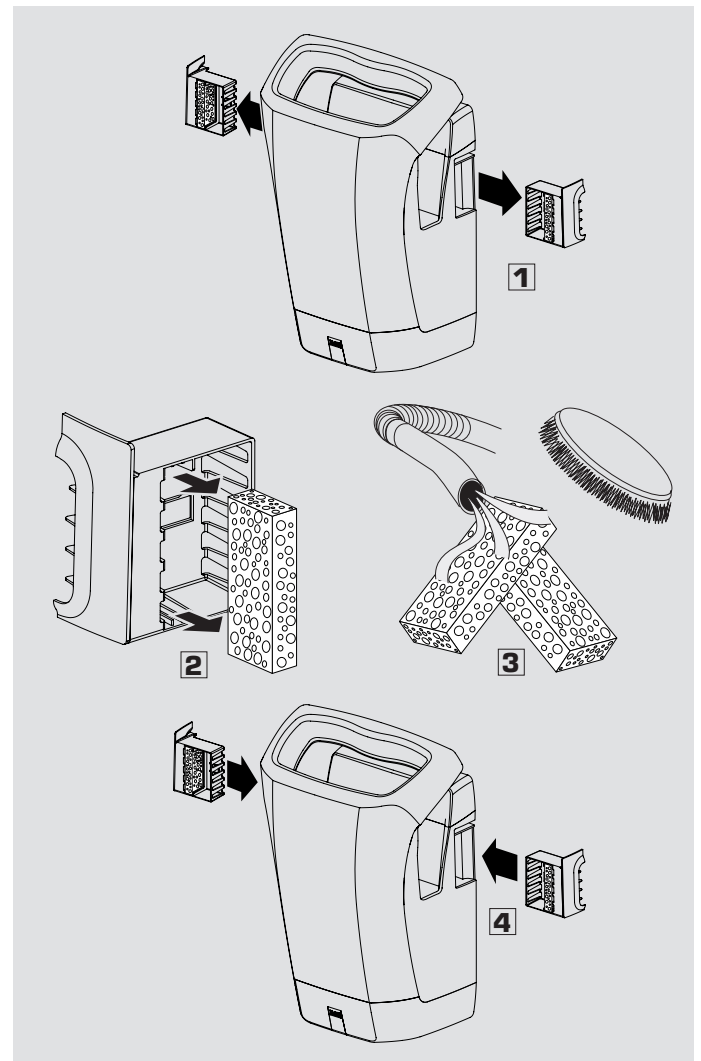
## Emptying and cleaning the tank

- ❑ Empty and clean the water recovery tank before it is full (at least once a week) to avoid foul smells.
- ❑ To remove the tank, Pull the tank forwards.
- ❑ Remove the cover.
- ❑ Empty the tank.
- ❑ Clean the tank (you can use cleaning products).
- ❑ Close the cover.
- ❑ Install the tank.



### Routine cleaning of the air filter

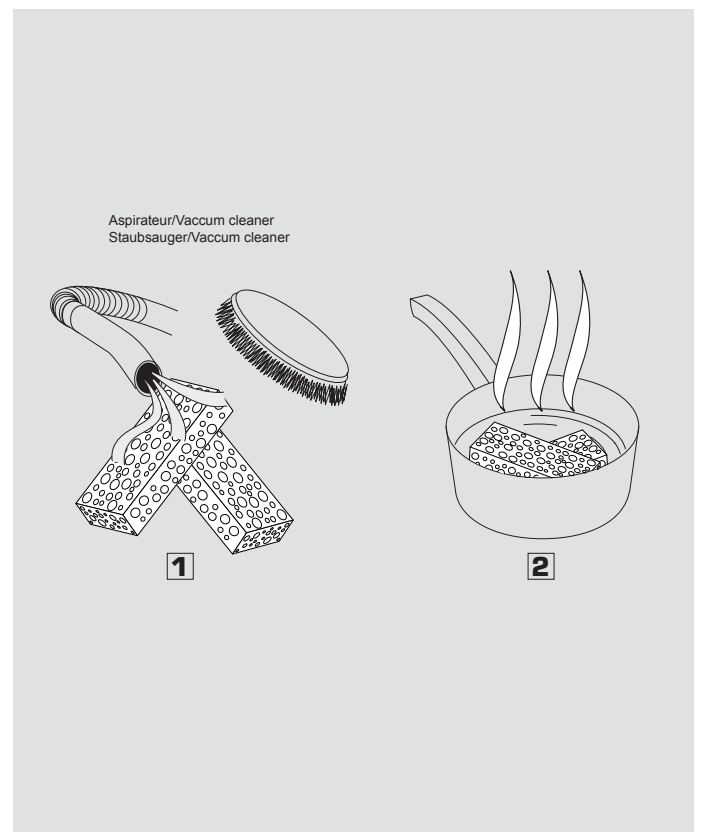
- ☐ Pull the 2 filter holder modules using the tab
- ☐ Remove the 2 filters
- ☐ Vacuum the 2 filters by rubbing them with a brush to remove the dust
- ☐ Put back the 2 filter holders till the clip



### Detailed cleaning of copper filters

Remove the 2 filters as in paragraph 2 (above)

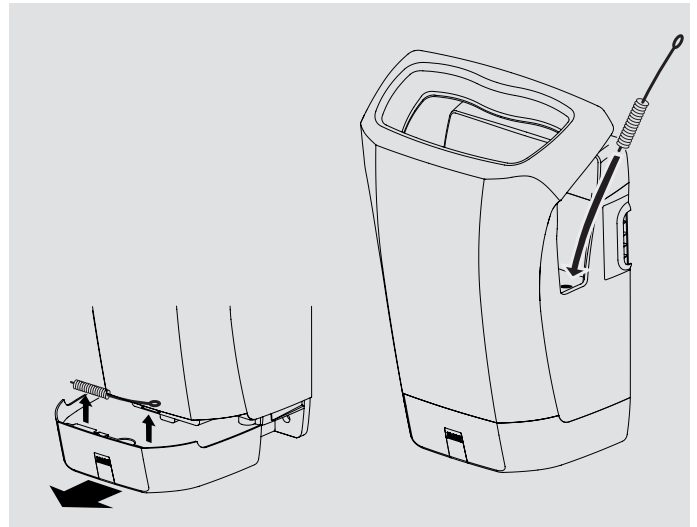
- ☐ Vacuum the 2 filters by rubbing them with a brush to remove the dust
- ☐ Place them in a small pan (or a kettle) and boil them with a soup spoon of citric acid, vinegar or salt.  
Then put back the dry filters in the device.



# 4

## Cleaning the exhaust system

Regularly clean the interior of the exhaust system using the rifle-type brush (provided in the package). It is recommended to carry out this operation every time the reservoir is drained.



## V CHARACTERISTICS

**Drying time: less than 20 seconds**  
(the drying time depends on the humidity, the ambient temperature and the surface area to be dried)

**Supply voltage: 220-240 V**

**Frequency: 50 Hz**

**Nominal power: 1200 W (no heating resistor)**

**Brush motor**

**Class II - IP 44 product**

**Electronic safety device in event of malfunction**

**Capacitive detection system**

**Capacity of the tank: 1500 ml**

**Noise level: 75 dBA**

**2 antibacterial air filters that are readily accessible for easy cleaning**

**Total weight: 6 kg**

