

Strut Framework System

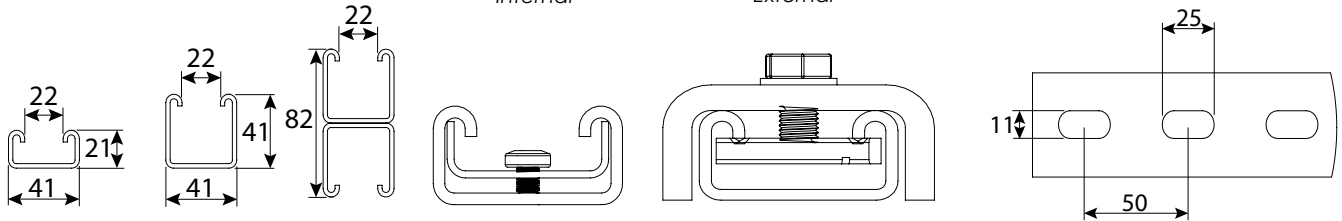
TS21P-3
TS21S-3

TS41P-3
TS41S-3

Back to Back

Couplers

Slotted strut hole dimensions



Material: 2.5mm thick cold rolled steel (also available in 1.5mm)

Length 3.0m

Service Boxes & Plates

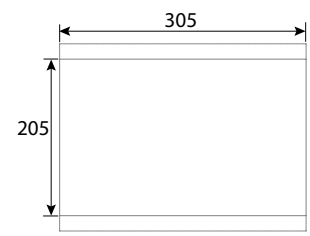
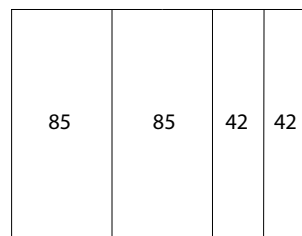
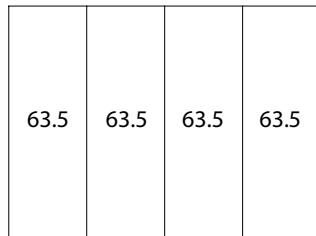
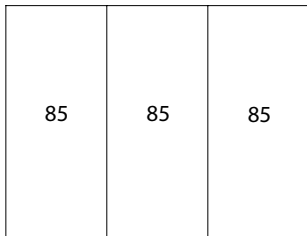
Service Box Compartment Options

Floor Cut Out Aperture

3 Compartment (mm)

4 Compartment 1 (mm)

4 Compartment 2 (mm)



CSB3, CSB3/S, FSB3, CSB3/ED

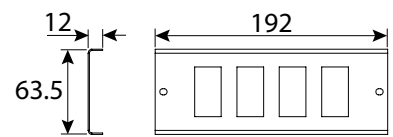
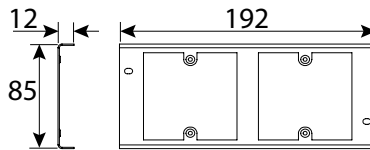
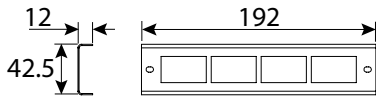
CSB4/SL

CSB4, CSB4/S, FSB4, CSB4/ED

Half Width Service Plates

Full Width Service Plates

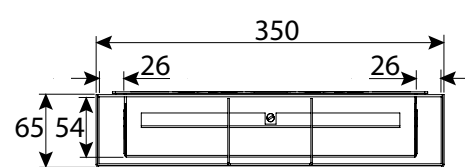
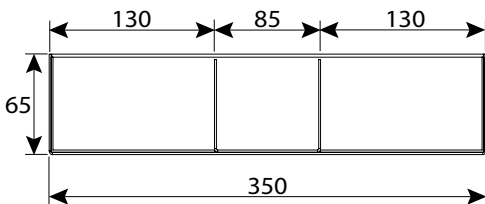
SL Style Service Plates



Flush Screed Modular Trunking

Flush Screed Modular Cross Section

Flush Screed Modular Service Box

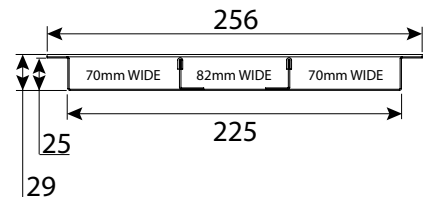
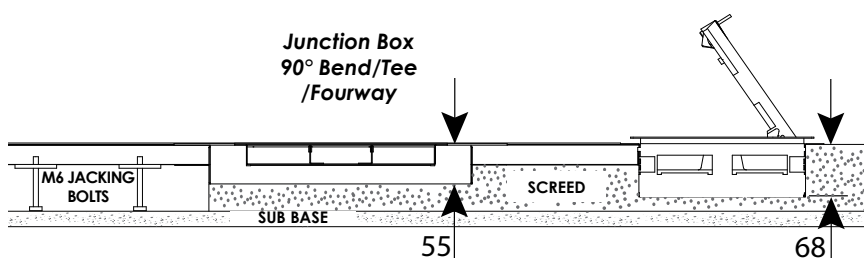


Flush screed modular trunking must be fully supported across its complete width.

Flush Screed Trunking

Three Compartment Service Box

Flush Screed Cross Section



Screed trunking must be fully supported across its complete width.

The minimum screed depth is 68mm.

Service boxes should be installed when the trunking is fitted

Please see technical details for Service Boxes above.